

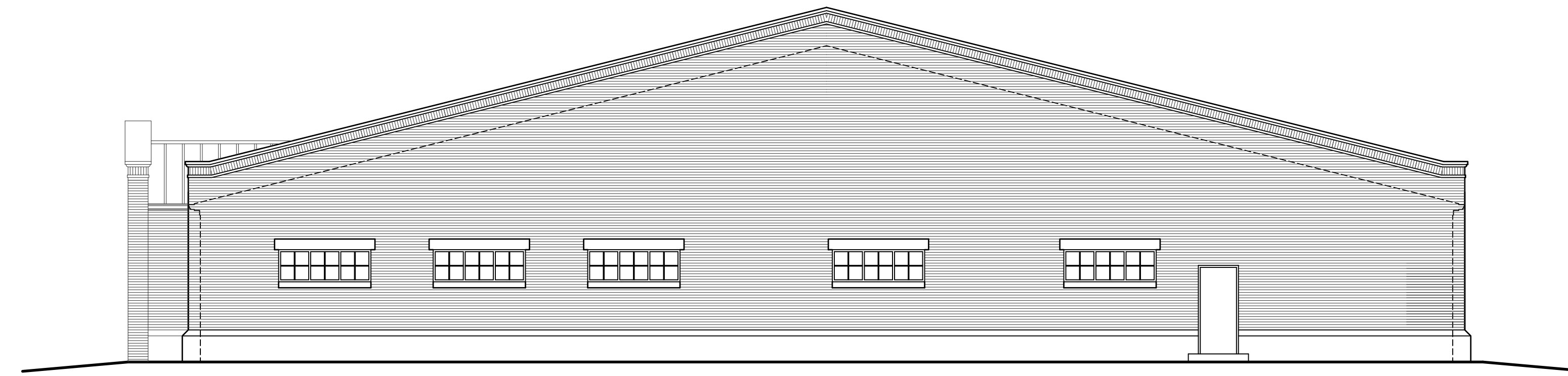
CONSULTANTS



PRELIMINARY WEST ELEVATION
SCALE: 1/8" = 1'-0"



PRELIMINARY SOUTH ELEVATION
SCALE: 1/8" = 1'-0"



PRELIMINARY EAST ELEVATION
SCALE: 1/8" = 1'-0"



PRELIMINARY NORTH ELEVATION
SCALE: 1/8" = 1'-0"

PRELIMINARY DESIGN FOR THE NEW
OZARK DALE COUNTY
PUBLIC LIBRARY
OZARK, ALABAMA

ISSUE: JANUARY 3, 2018		
MARK	DATE	DESCRIPTION

PROJECT NO:
DRAWN BY: CHAD M. BROWN
CHECKED BY:
SHEET TITLE

**PRELIMINARY
ELEVATIONS**